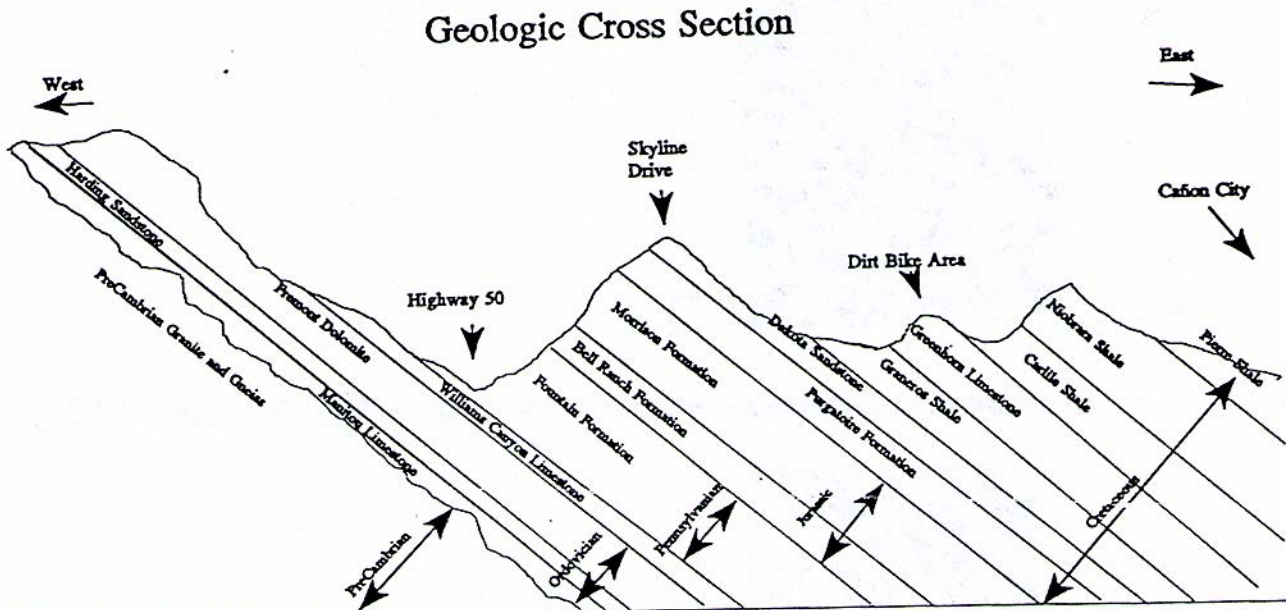


Geologic Cross section of Canon City Area.



Thicknesses of Geologic Formations

Manitou Limestone	65 ft.
Harding Sandstone	100 ft.
Fremont Dolomite	300 ft.
Williams Canyon Limestone	130 ft.
Fountain Formation	2,000 ft.
Bell Ranch Formation	200 ft.
Morrison Formation	350 ft.
Purgatoire Formation	200 ft.
Dakota Sandstone	110 ft.
Greneros Shale	115 ft.
Greenhorn Limestone	140 ft.
Carlile Shale	230 ft.
Niobrara Shale	610 ft.
Pierre Shale	3,900 ft.